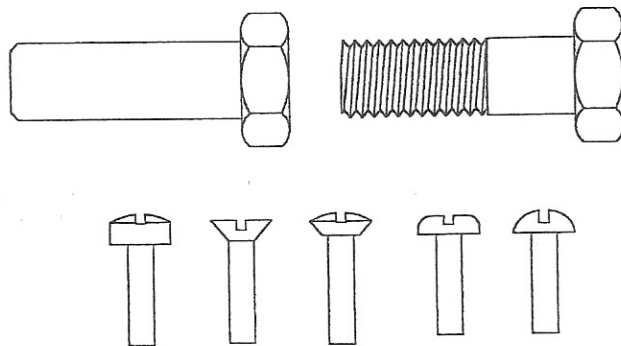


# ....H & L TOOLWORX....

PRECISION HEADER TOOLING SUPPLIER



## H & L TOOLWORX

808 VICTORY TRAIL RD  
PO BOX 854  
GAFFNEY, SC 29342-0854

Phone: 1-864-488-0320

Fax: 1-864-488-0740

E-mail: [HLToolworxTool@aol.com](mailto:HLToolworxTool@aol.com)

### Websites

[www.HLtoolworx.com](http://www.HLtoolworx.com)

[www.coldheadertooling.com](http://www.coldheadertooling.com)

*QUALITY HEADER TOOLING SERVICES*

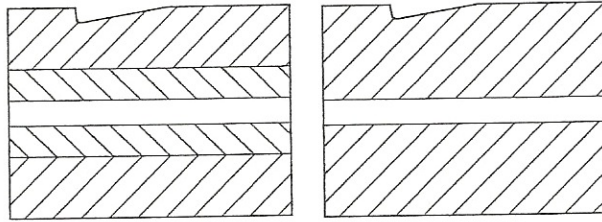
# H & L TOOLWORX

## *Product Index*

CASED CARBIDE DIES	PG. 1
CASED STEEL DIES	PG. 1
SOLID STEEL DIES	PG. 1
BACKING PLATES & PLUGS	PG. 2
FEED ROLLS	PG. 2
CUTTER INSERTS	PG. 3
CONING PUNCHES	PG. 4
CUT-OFF KNIVES	PG. 5, 6
CUT-OFF FINGERS	PG. 5, 6
SEMI-FINISHED CARBIDE INSERTS	PG. 7
STEEL INSERTS	PG. 8
QUILLS	PG. 9
SPRING PUNCHES	PG. 10

# .....H&L TOOLWORX.....

CASED CARBIDE DIES  
CASED STEEL DIES  
SOLID STEEL DIES



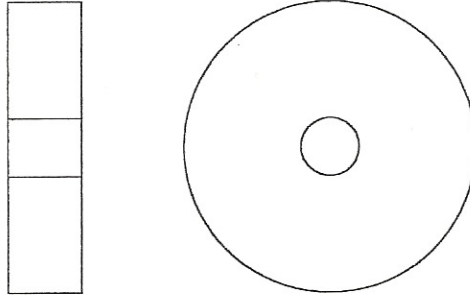
CASED CARBIDE  
CASED STEEL

SOLID STEEL

DIES MADE TO MFG STANDARDS AND CUSTOMER STANDARDS.  
SPECIFY CASED CARBIDE, CASED STEEL OR SOLID STEEL.  
SPECIFY HOLE SIZE NEEDED, DIE DIAMETER AND LENGTH.  
CARBIDE SIZE TO SUIT OR SPECIALS AVAILABLE.  
CUSTOMER PRINTS WELCOME

# H&L TOOLWORX

## BACK PLATES & PLUGS

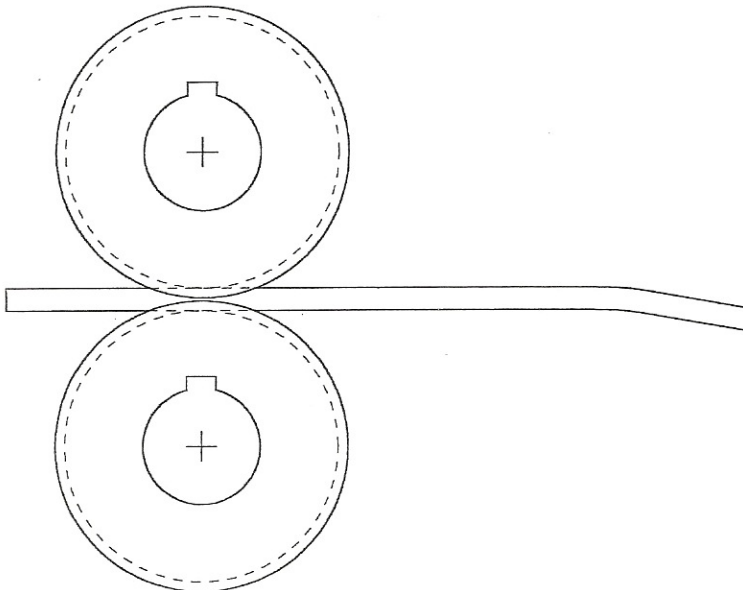


BACKING PLATES OFFERED IN WIDE VARIETY OF SIZES

MADE TO MFG STANDARDS OR SPECIAL

---

## FEED ROLLS



FEED ROLLS TO MFG STANDARDS

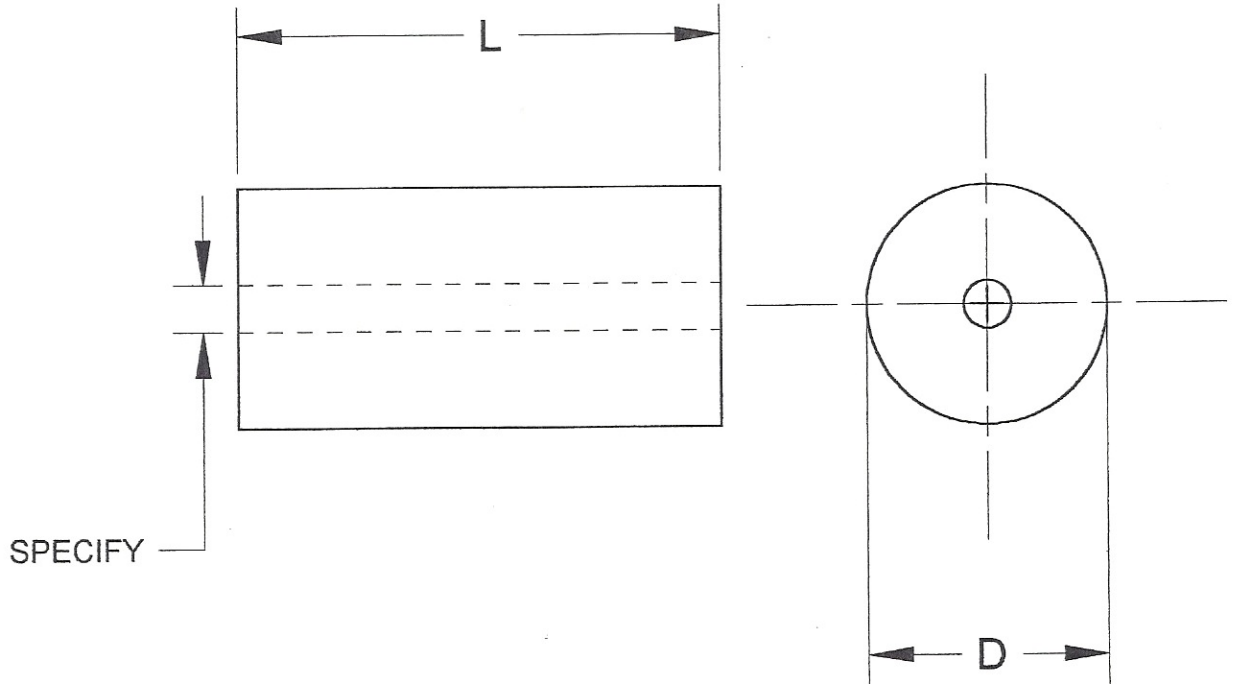
STANDARD SIZES AND SPECIALS AVAILABLE

SPECIFY GROOVE DIAMETER

SINGLE OR DOUBLE GROOVE

# .....H&L TOOLWORX....

## CARBIDE CUTTER INSERTS



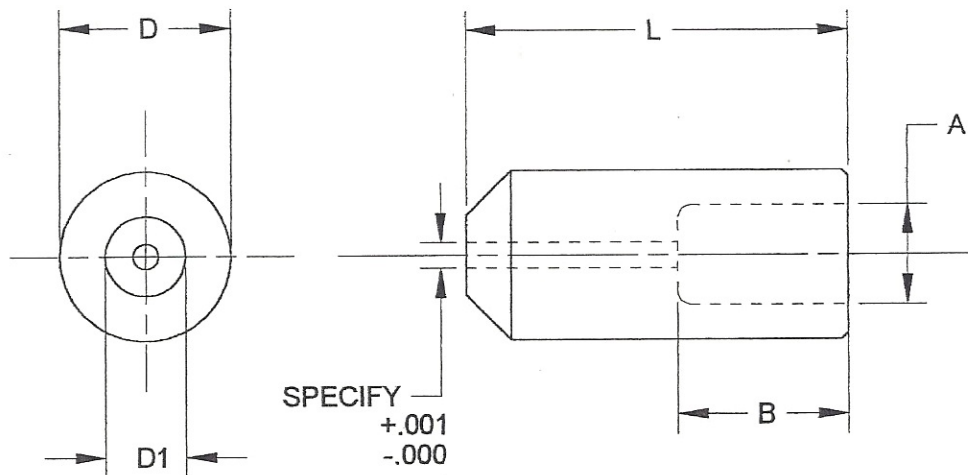
ITEM #	D	L
CC11	.314/.3135	.440/.438
CC12	.377/.3765	.440/.438
CC13	.4395/.439	.440/.438
CC14	.502/.5015	.548/.546
CC15	.502/.5015	.742/.740
CC16	.627/.6265	.742/.740
CC17	.627/.6265	.992/.990
CC18	.752/.7515	.929/.927
CC19	.877/.8765	1.118/1.116
CC20	1.002/1.0015	1.438/1.436

SPECIFY ID SIZE, ID's ARE HONED TO +.0005 TOLERANCE

25% AND 20% COBALT CARBIDE USED AS STANDARD

SPECIAL SIZES AND GRADES AVAILABLE

# H&L TOOLWORX STANDARD CONING PUNCHES



MACHINE	ITEM #	D	L	A	B	D1
1/8 HEADMASTER	CP01	.624	1.625	.375	.625	.500
0 WFF	CP02	.874	1.500	.437	1.000	.375
1 WFF	CP03	.874	1.500	.500	1.000	.500
2 WFF	CP04	1.061	2.375	.625	1.0625	.500
3/16 HIPRO	CP05	.874	1.750	.500	1.0625	.500
1/4 HARTFORD SPECIAL	CP06	1.123	2.593	.660	1.375	.625
1/4 WATERBURY	CP07	1.498	1.9375	.625	1.000	1.125

WHEN ORDERING, SPECIFY ITEM # AND HOLE SIZE  
 SPECIFY IMPRESSION IF NEEDED  
 SPECIALS AVAILABLE UPON REQUEST



# **H&L TOOLWORX**

## **SOLID STEEL AND CARBIDE CUT-OFF KNIVES**

WIDE VARIETY OF STANDARD AND SPECIALS AVAILABLE

SPECIFY GROOVE OR WIRE SIZE

SPECIFY SHORT WORK(SW), SPECIFY BEVEL NOSE(B) IF NEEDED

PAGE 1 OF 2

### **NATIONAL**

<b>PART #</b>	<b>MACHINE</b>
K101	1/8 NATIONAL DSSD
K102	3/16 NATIONAL DSSD
K103	1/4 NATIONAL DSSD
K104	5/16 NATIONAL DSSD
K105	3/8 NATIONAL DSSD
K106	1/2 NATIONAL DSSD

### **SACMA**

<b>PART #</b>	<b>MACHINE</b>
K201	SACMA SP01
K202	SACMA SP11
K203	SACMA SP21
K204	SACMA SP31

### **HARTFORD**

<b>PART #</b>	<b>MACHINE</b>
K301	1/8 2-425
K302	1/8 2-450
K303	3/16 3-300, 3-350
K304	5/16 4-250, 5-250

### **WATERBURY CUT-OFF & RETURN**

<b>PART#</b>	<b>MACHINE</b>
K401	3/16 WATERBURY
K402	1/4 WATERBURY
K403	5/16 WATERBURY
K404	3/8 WATERBURY
K405	1/2 WATERBURY

## **CARLO SALVI**

<b>ITEM#</b>	<b>MACHINE</b>
<b>K501</b>	<b>1/8</b>
<b>K502</b>	<b>3/16</b>
<b>K503</b>	<b>1/4</b>
<b>K504</b>	<b>5/16</b>
<b>K505</b>	<b>5/32</b>
<b>K506</b>	<b>1/4</b>



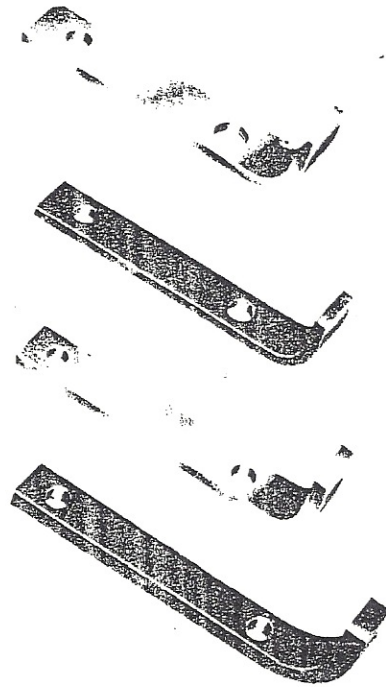
# **WATERBURY**

<b>ITEM #</b>	<b>MACHINE</b>
<b>K601</b>	<b>1/8 HEADMASTER</b>
<b>K602</b>	<b>3/16 HEADMASTER</b>
<b>K603</b>	<b>#0 TOGGLE</b>
<b>K604</b>	<b>#1 TOGGLE</b>
<b>K605</b>	<b>#2 TOGGLE</b>
<b>K606</b>	<b>3/16 HIPRO 10-32</b>
<b>K607</b>	<b>5/16 HIPRO</b>
<b>K608</b>	<b>#10 HIPRO LG.</b>
<b>K609</b>	<b>#10 HIPRO SHT.</b>
<b>K610</b>	<b>3/16 HIPRO 8-32</b>

## **NAKASHIMADA**

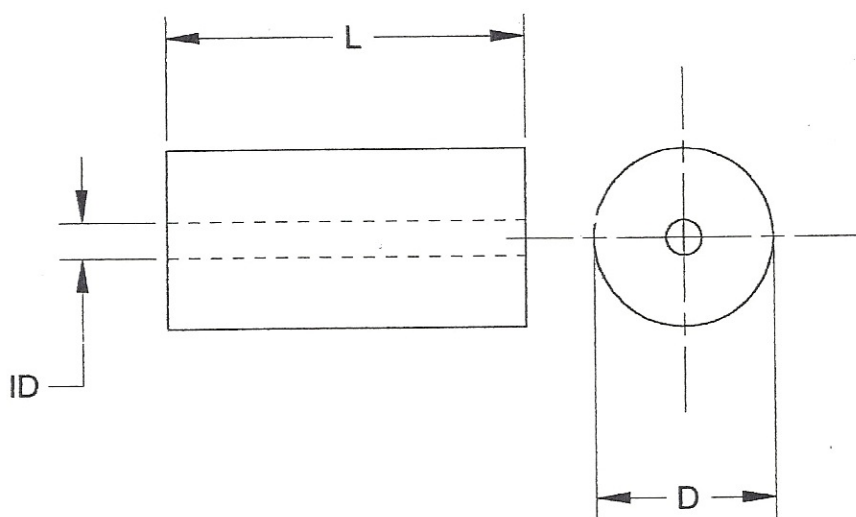
<b>ITEM #</b>	<b>MACHINE</b>
<b>K701</b>	<b>1/8</b>
<b>K702</b>	<b>3/16</b>
<b>K703</b>	<b>1/4 H20/20A/20AU/20U/PF630</b>
<b>K704</b>	<b>1/4 H20G/20E/20F/CS</b>
<b>K705</b>	<b>3/8</b>
<b>K706</b>	<b>5/16</b>
<b>K707</b>	<b>1/2</b>

# CUT-OFF KNIVES



# .....H&L TOOLWORX.....

## SEMI-FINISHED CARBIDE INSERTS

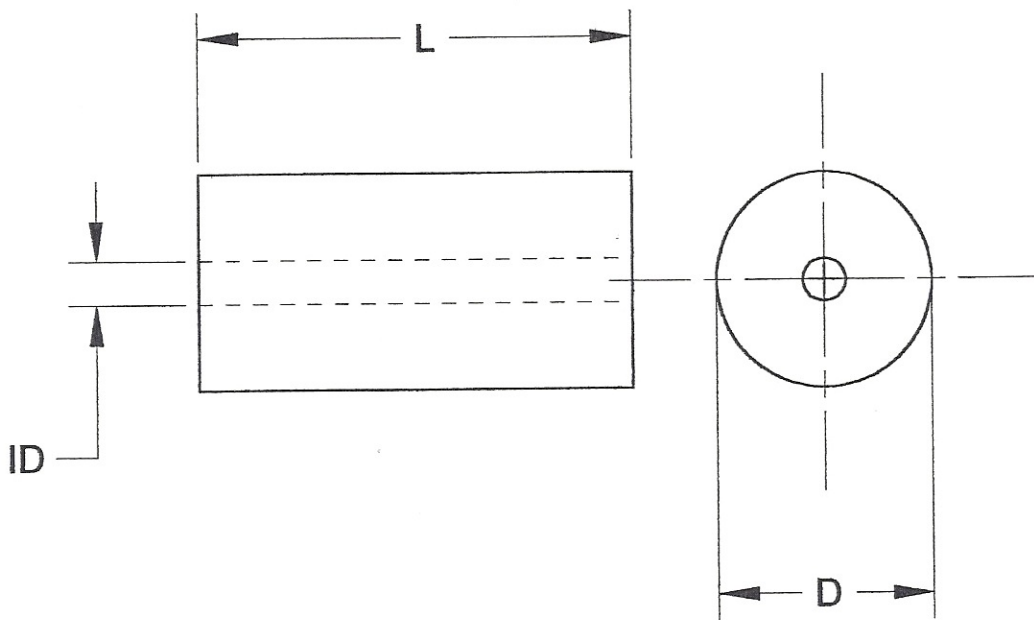


SEMI-FINISHED CARBIDE INSERTS ARE PROVIDED WITH GROUND OD, LENGTH AND ID'S ARE HONED  
TOLERANCES ARE: OD+-.0005, LENGTH +.010+.020, ID'S-.003-.005

VARIOUS CARBIDE GRADES ARE AVAILABLE, SPECIAL TOLERANCES ALSO AVAILABLE

# .....H&L TOOLWORX.....

## SEMI-FINISHED STEEL INSERTS

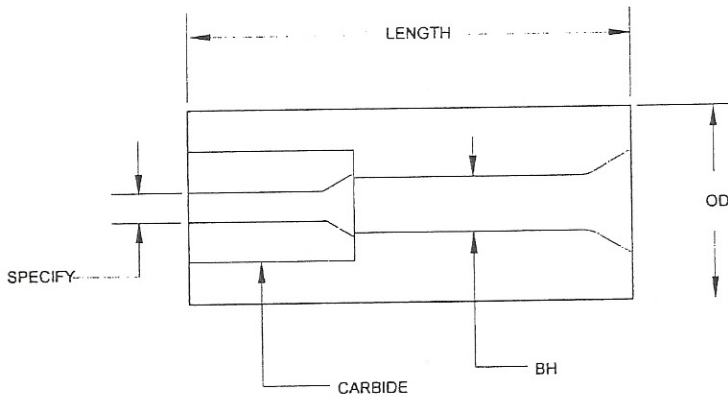


STEEL INSERTS HAVE GROUND OD, LENGTH AND HONED ID

TOLERANCES ARE: OD $\pm$ .0005, LENGTH  $+.010+.020$ , ID's $-.003-.005$

VARIOUS STEEL GRADES ARE AVAILABLE

SPECIAL TOLERANCES AVAILABLE



H&L TOOLWORX STD QUILL LIST

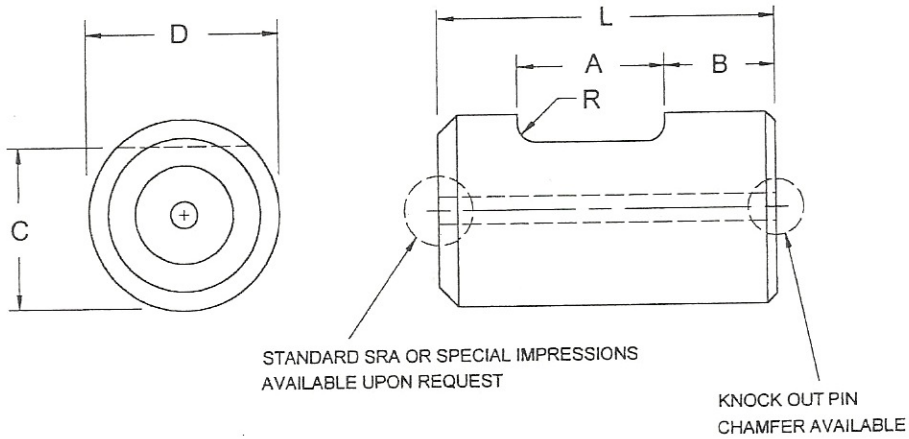
(SPECIALS AVAILABLE UPON REQUEST)

ITEM#	OD	LENGTH	BH	CARBIDE
Q01C	.562	1.375	.156	5/16x5/8
Q02C	.562	1.125	.156	5/16x5/8
Q03C	.687	1.625	.250	3/8x3/4
Q04C	.874	1.375	.312	1/2x3/4
Q05C	.874	2.000	.312	1/2x3/4
Q06C	.999	2.375	.375	5/8x1
Q07C	.999	1.750	.281	1/2x3/4
Q08C	.749	1.500	.281	1/2x3/4
Q09C	.874	1.625	.312	1/2x3/4
Q10C	.874	2.500	.312	1/2x3/4
Q11C	1.249	2.500	.375	5/8x1
Q12C	.999	2.500	.375	1/2x3/4
Q13C	1.249	2.250	.375	5/8x1
Q14C	1.124	1.875	.437	5/8x1
Q15C	1.124	2.500	.375	5/8x1
Q16C	1.499	2.500	.625	1x1-1/2
Q17C	1.374	3.000	.437	3/4x1-1/8
Q18C	1.624	3.250	1/2 or 5/8	1x1-1/8

**ORDERING INFO**

- 1)FOR SOLID STEEL QUILLS, EXCLUDE "C" FROM ITEM#
- 2)SPECIFY WIRE SIZE
- 3)SPECIALS AVAILABLE UPON REQUEST

# H&L TOOLWORX SPRING PUNCHES



ITEM NUMBER	D	L	A	B	C	R	CARBIDE DIAMETER
SP01	.812	1.265	.609	.218	.720	.125	.375
SP02	.812	1.406	.609	.218	.720	.0935	.375
SP03	.812	1.265	.625	.300	.720	.125	.375
SP04	.8745	1.609	.750	.484	.751	.125	.500
SP05	.8745	1.875	.750	.281	.812	.156	.500
SP06	1.2495	2.203	.968	.718	1.063	.125	.625
SP07	1.2495	2.250	.968	.437	1.059	.125	.625
SP08	1.374	2.093	.859	.875	1.187	.156	.750
SP09	1.374	2.562	LONG SLOT	.593	1.187	.156	.750
SP10	1.374	1.937	LONG SLOT	.875	1.187	.156	.750
SP11	1.374	2.484	.937	.750	1.187	.156	.750
SP12	1.749	2.625	1.250	.937	1.530	.156	.875

## ORDERING INFO

1. ITEM NUMBERS ABOVE ARE FOR SOLID STEEL
2. ADD "C" AFTER ITEM NUMBER FOR CARBIDE INSERTED
3. SPECIFY HOLE SIZE NEEDED
4. SPECIFY IMPRESSION NEEDED
5. IF NO IMP SPEC'D, WILL SUPPLY STRAIGHT HOLE
6. SPECIAL SIZES AVAILABLE UPON REQUEST